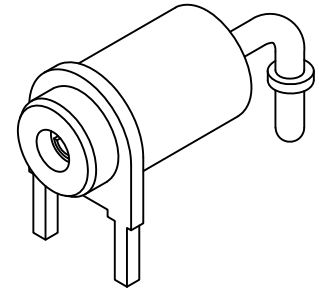
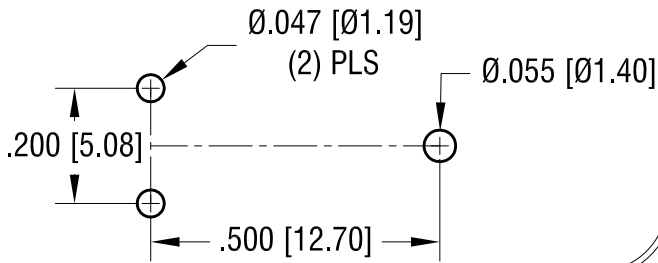
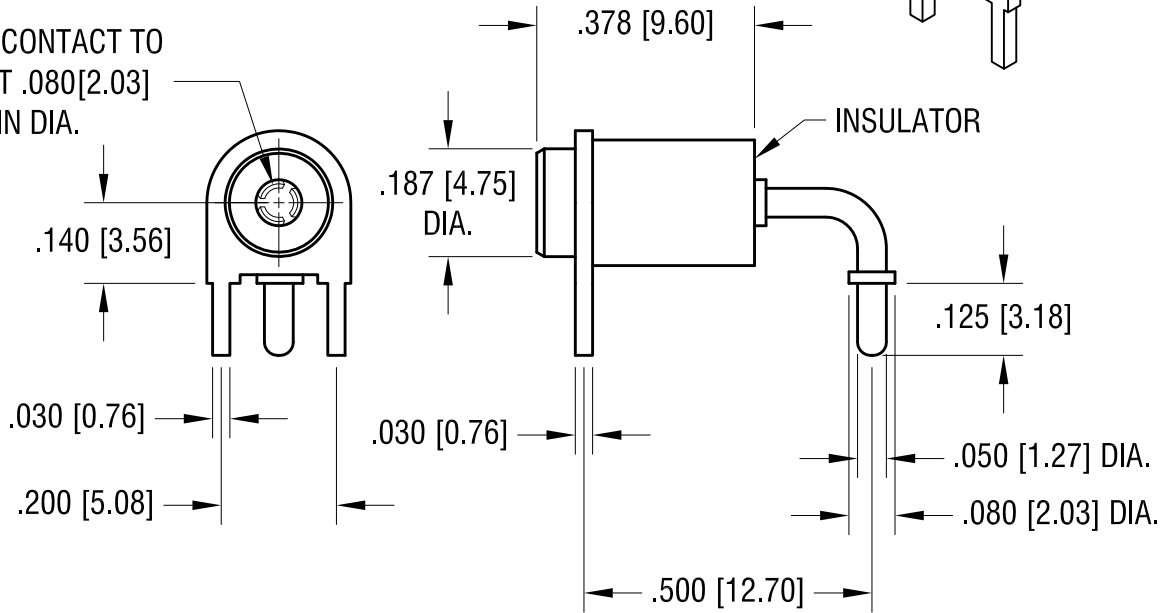


THIS DOCUMENT IS THE PROPERTY OF  
KEYSTONE ELECTRONICS CORP. AND  
SHALL NOT BE REPRODUCED, DISTRIBUTED  
OR USED AS A BASIS FOR MANUFACTURE  
WITHOUT PRIOR WRITTEN PERMISSION  
FROM KEYSTONE ELECTRONICS CORP.

**MOUNTING DETAIL**



SPRING CONTACT TO  
ACCEPT .080[2.03]  
PIN DIA.



**NOTES:**

1. TERMINAL JACK: MAT'L - BERYLLIUM COPPER (QQ-C-533)
2. BUSHING: MAT'L - PTFE
3. MOUNTING BRACKET: MAT'L - BRASS

PART NO.	COLOR
11016	WHITE
11016-R	RED
11016-B	BLACK

**KEYSTONE ELECTRONICS CORP.**  
www.keyelco.com • ASTORIA, N.Y. 11105-2017 • Tel (718) 956-8900

PART NAME: **HORIZONTAL INSULATED TEST JACK**

MATERIAL: **AS NOTED**

FINISH: <b>GOLD PLATE</b>	DRN BY: <b>N.T.</b>	DATE: <b>7.10.07</b>
	APP'D: <b>LN</b>	SCALE: <b>3X</b>

TOLERANCES INCH [MM]  
DECIMAL ± .005 [± 0.15]  
ANGULAR ± 1°  
UNLESS OTHERWISE SPECIFIED

CODE: **C/M** DWG NO.: **11016-**

DATE	DESCRIPTION	REV.